



SIMPLE LIFE



Cowslip Drive, Redcar, TS10

£1,025 PCM

Situated in the seaside town of Redcar, Kirkleatham Green sits eight miles east of Middlesbrough. With Redcar train station less than two miles away, the site offers direct and easy access to Middlesbrough, Darlington and Hartlepool. The area is also well connected by the nearby A19 taking you north to Sunderland and Tyneside or south to North Yorkshire.

Welcome to your spacious 3-bedroom family home.

Upon walking into the Eveleigh ESL, you are greeted with the family U-shaped kitchen and dining area to the front of the property. Spanning the entirety of the back of the property, you have the living room, flooded with natural light from the glass panelled, double doors which lead out on to your private patio and garden, perfect for summer evenings!

Upstairs you will find a sizeable main bedroom, complete with a private ensuite shower room and fitted wardrobe. A second double bedroom sits next-door, along with a single third bedroom and a modern family bathroom.

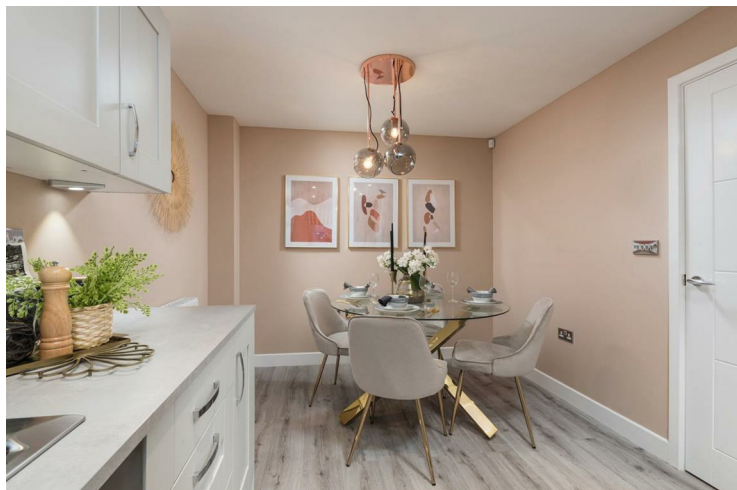
You'll have endless opportunities for leisure with easy access to Redcar's sandy beaches as well as the picturesque coast and riverside walks of the Tees Valley. The area delivers a range of pubs and restaurants as well as a popular weekly market in Redcar. To meet your shopping requirements, there is an Asda, Aldi and Sainsbury's all within two miles of the site.

The area benefits from 16 highly rated schools within three miles of the site, including Riverdale Primary School and Green Gates Primary School.

To access the site use post code TS10 4GB.

Deposit £1180
Holding Deposit £230
Unfurnished
Council Tax C
Available 21st January 2026





Key Features

- Private driveway
- Dishwasher
- Washing machine
- Wood effect flooring downstairs
- Private back garden
- Security alarm system
- Fridge freezer
- Oven and hob
- Modern, white kitchen units

Location

